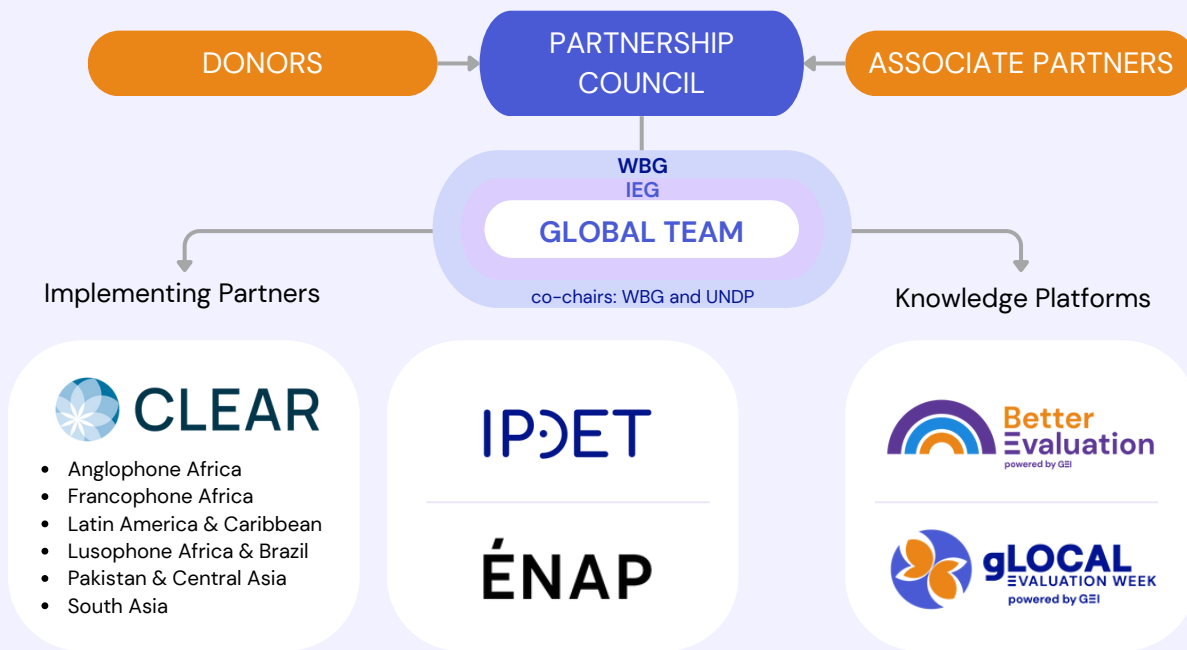


The Global Evaluation Initiative (GEI) is a global partnership of organizations and experts. Established in 2020 by the World Bank’s Independent Evaluation Group (WBG) and UNDP’s Independent Evaluation Office (IEG), the GEI brings together over 35 partners from around the globe. Our aim is simple: **to help countries strengthen their national monitoring and evaluation (M&E) systems and produce better evidence to support decision-making.**

GEI INSTITUTIONAL SETUP



What does the GEI do?

Country Partnerships: The GEI assists governments in developing countries to improve their national M&E systems. From helping to define goals to supporting implementation, we offer guidance and suggest solutions tailored to the local context.

Training & Professional Development: The GEI offers various learning opportunities at global, regional, and country levels for decision-makers, evaluators, and anyone interested in understanding the importance of M&E. We provide tools and skills to help people make sense of evaluation findings and use them to drive positive change.

Knowledge Sharing: We capture and share innovative M&E knowledge and practical experiences globally and locally. We foster knowledge exchange across borders and adapt international best practices to local contexts, with a focus on South-South exchange.

MESA

The Monitoring and Evaluation Systems Analysis (MESA) is a diagnostic tool that guides country stakeholders in gathering, structuring, and analyzing information on the current capacity of their country’s M&E ecosystem.



Better Evaluation

The GEI’s knowledge platform offers guidance and information on over 300 evaluation methods and processes used in evaluation and resources on strengthening M&E systems. The platform hosts thousands of M&E resources, blog posts from evaluation experts, as well as guides and tools.



gLOCAL

gLOCAL Evaluation Week is a unique knowledge-sharing event that connects a global community of people across sectors and regions. Over the course of a week, participants from all over the world join events to learn from each other on a vast number of topics and themes.

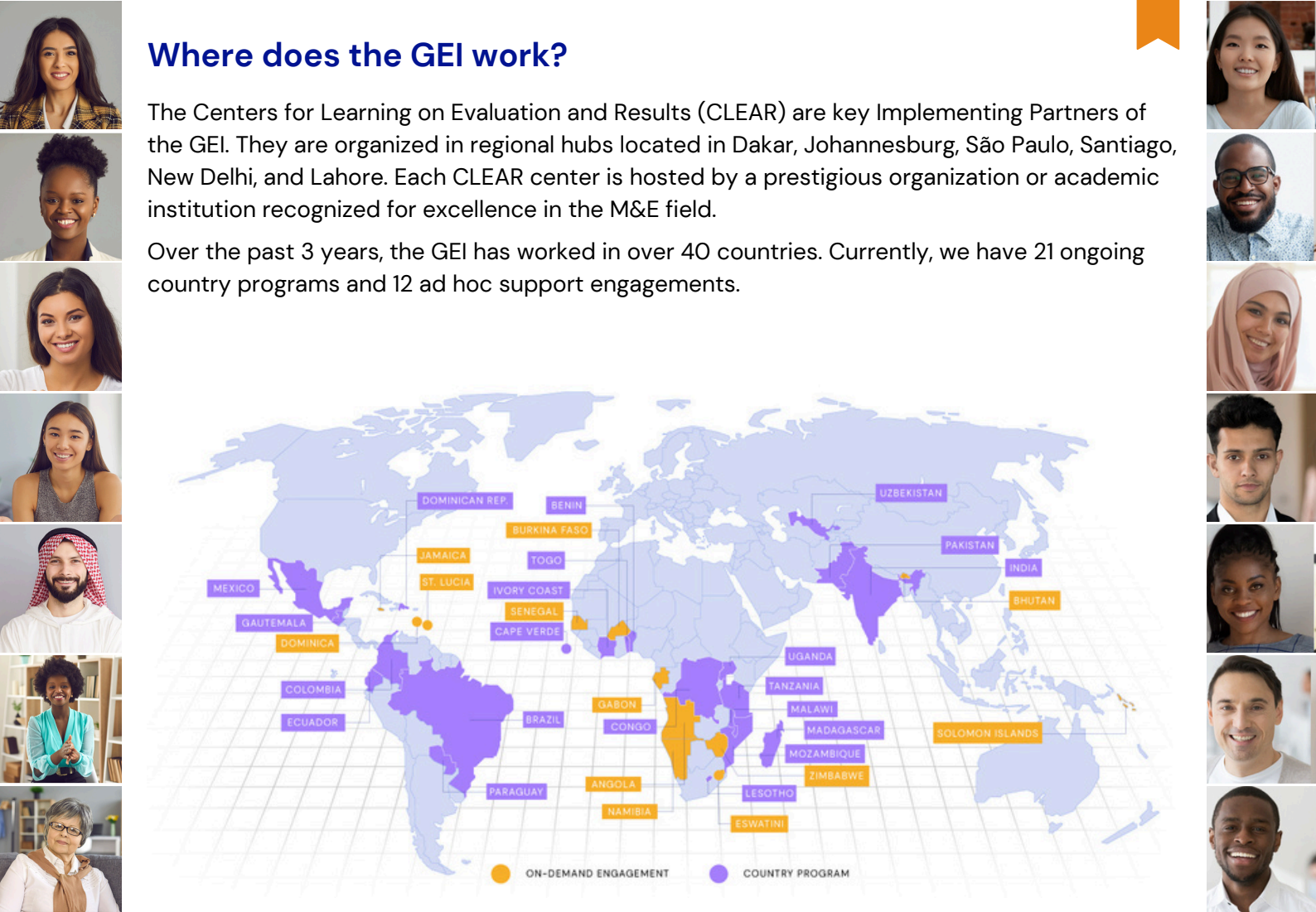
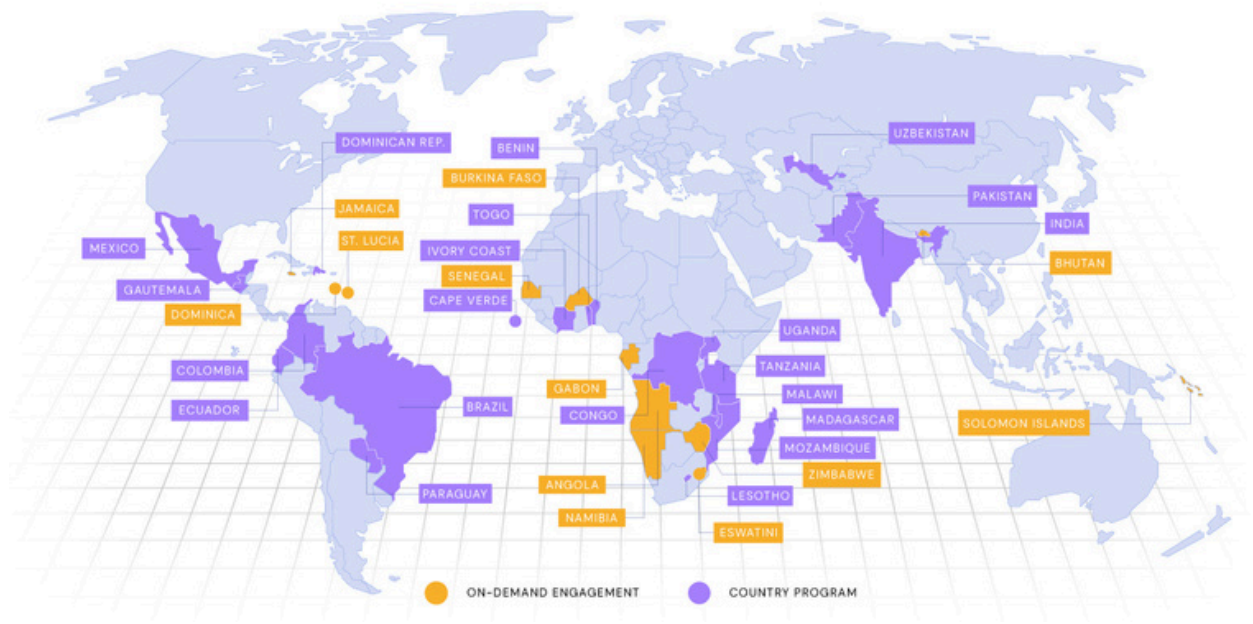




Where does the GEI work?

The Centers for Learning on Evaluation and Results (CLEAR) are key Implementing Partners of the GEI. They are organized in regional hubs located in Dakar, Johannesburg, São Paulo, Santiago, New Delhi, and Lahore. Each CLEAR center is hosted by a prestigious organization or academic institution recognized for excellence in the M&E field.

Over the past 3 years, the GEI has worked in over 40 countries. Currently, we have 21 ongoing country programs and 12 ad hoc support engagements.



WE WANT TO COLLABORATE WITH YOU!



Working in a Country Listed Above?

We can connect you and your in-country partners with other stakeholders in the M&E space, invite you to relevant meetings/events, or share information on training and professional development opportunities.



Working in a Country NOT Listed?

GEI is always interested in supporting the strengthening of national M&E systems. Let's connect and discuss your ideas, needs and priorities and see how we can work together.



Interested in M&E Training and Knowledge?

We would be happy to connect you with resources or experts. For more information you can visit our knowledge platform, BetterEvaluation.org.

